

Class

Asteroidea

Superorder

Forcipulatacea

Spinulosacea

Valvatacea

Order

Brisingida

Forcipulatida

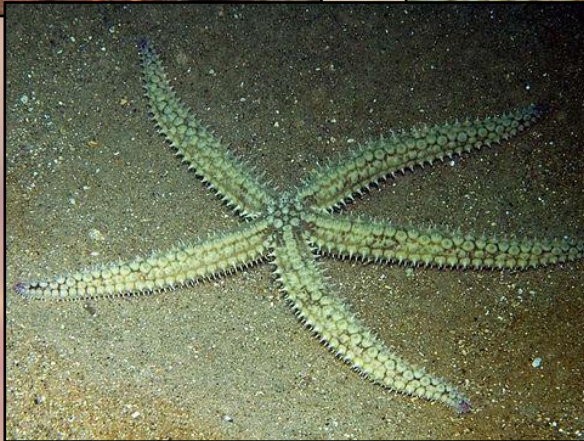
Spinulosida

Notomyotida

Paxillosida

Valvatida

Velatida



Class

Asteroidea

Superorder

Forcipulatacea

Spinulosacea

Valvatacea

Order

Brisingida

Forcipulatida

Spinulosida

Notomyotida

Paxillosida

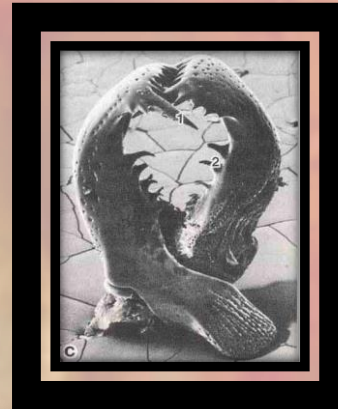
Valvatida

Velatida

Forcipulatacea – Key: Stalked Forcipulate pedicellaria



Brisingida:
Disc fused - ring, 6+ armed



Forcipulatida:
robust body



Class

Asteroidea

Superorder

Forcipulatacea

Spinulosacea

Valvatacea

Order

Brisingida

Forcipulatida

Spinulosida

Notomyotida

Paxillosida

Valvatida

Velatida

Spinulosida – Key: Lacking pedicellaria

Previously limited to Echinasteridae (Family) > Henrcia (Genus) in SA
– low spines on aboral surface



Class

Asteroidea

Superorder

Forcipulatacea

Spinulosacea

Valvatacea

Order

Brisingida

Forcipulatida

Spinulosida

Notomyotida

Paxillosida

Valvatida

Velatida

Spinulosida – Key: Lacking pedicellaria

New recorded colour morphs
possible new Echinaster sp. present



Class

Asteroidea

Superorder

Forcipulatacea

Spinulosacea

Valvatacea

Order

Brisingida

Forcipulatida

Spinulosida

Notomyotida

Paxillosida

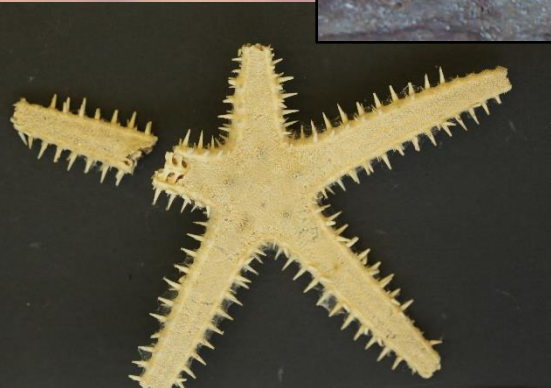
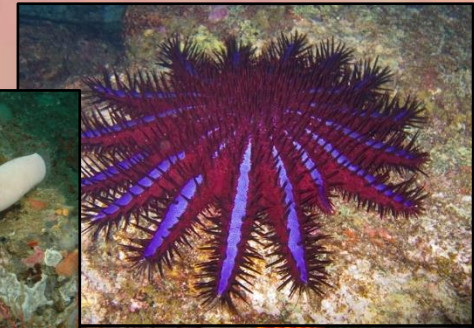
Valvatida

Velatida

Valvatacea – Key: High variation

Notomyotida:

Generally papulae present, rarely extending beyond abactinals



Paxillosida

Class

Asteroidea

Superorder

Forcipulatacea

Spinulosacea

Valvatacea

Order

Brisingida

Forcipulatida

Spinulosida

Notomyotida

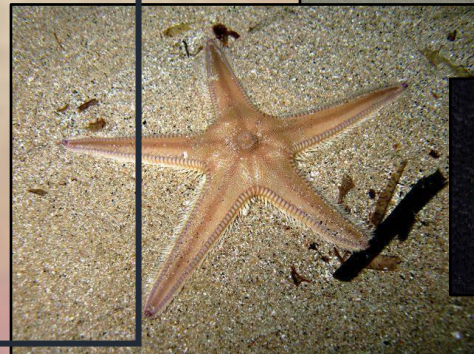
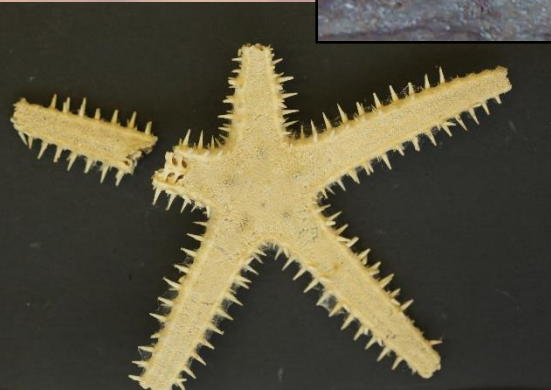
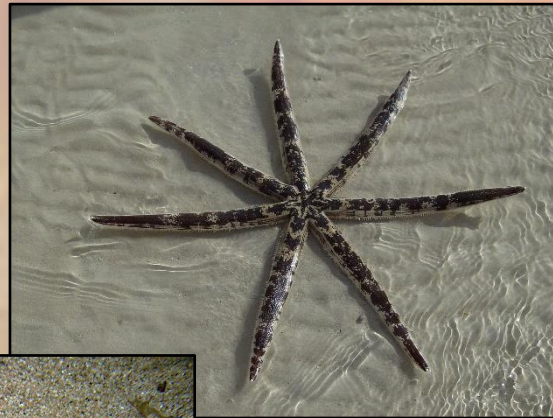
Paxillosida

Valvatida

Velatida

Notomyotida:

Papulae restricted to proximal areas of the aboral side, These asteroids are deep-sea dwelling and have flexible arms. The inner dorso-lateral surface of the arms contain characteristic longitudinal muscle bands



Class

Asteroidea

Superorder

Forcipulatacea

Spinulosacea

Valvatacea

Order

Brisingida

Forcipulatida

Spinulosida

Notomyotida

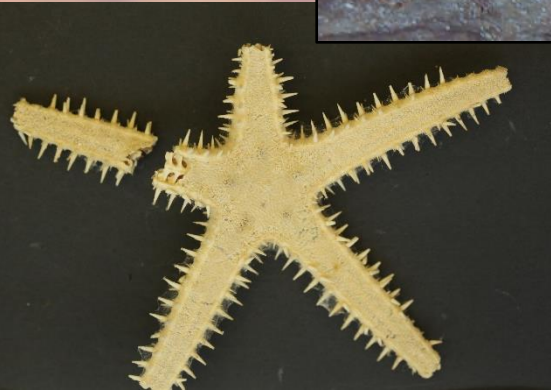
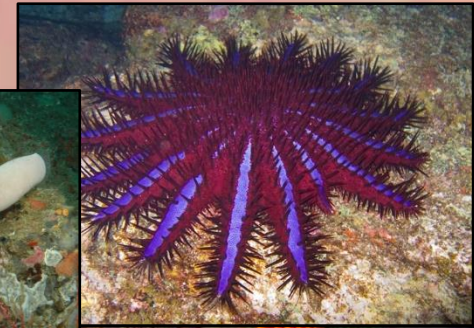
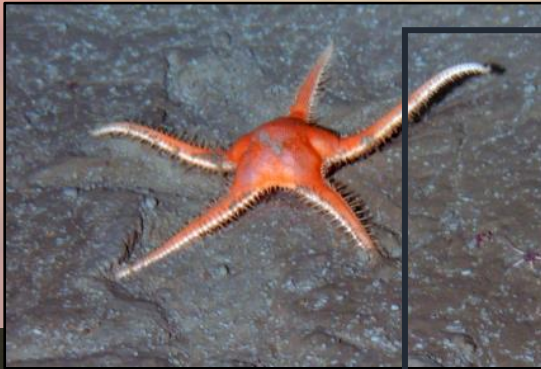
Paxillosida

Valvatida

Velatida

Paxillosida

No suckers on their tube feet, possess marginal plates, and has sessile pedicellariae.



Class

Asteroidea

Superorder

Forcipulatacea

Spinulosacea

Valvatacea

Order

Brisingida

Forcipulatida

Spinulosida

Notomyotida

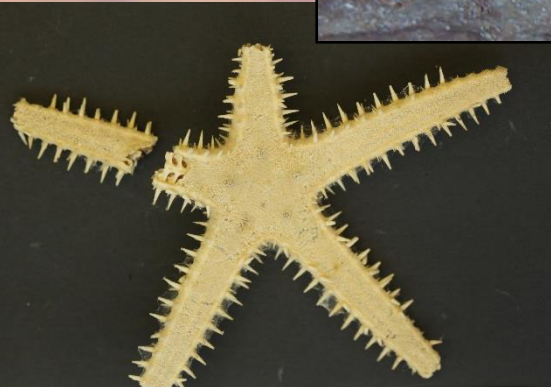
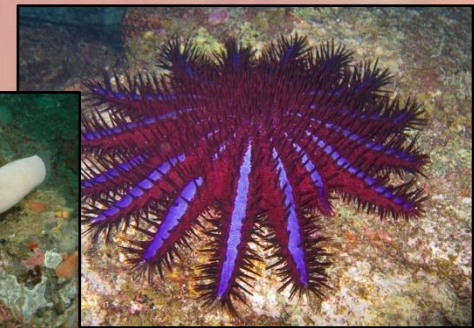
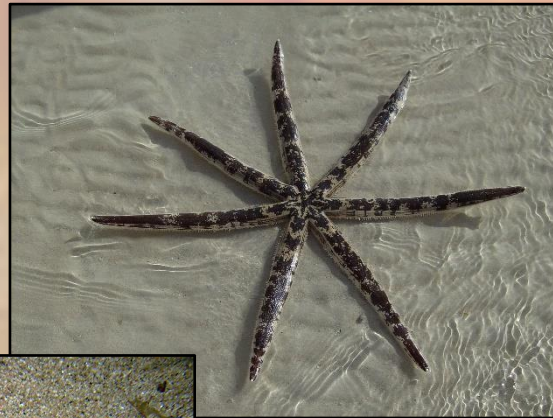
Paxillosida

Valvatida

Velatida

Valvatida:

This order is primarily identified by the presence of conspicuous marginal ossicles, which characterize most of the species



Class

Asteroidea

Superorder

Forcipulatacea

Spinulosacea

Valvatacea

Order

Brisingida

Forcipulatida

Spinulosida

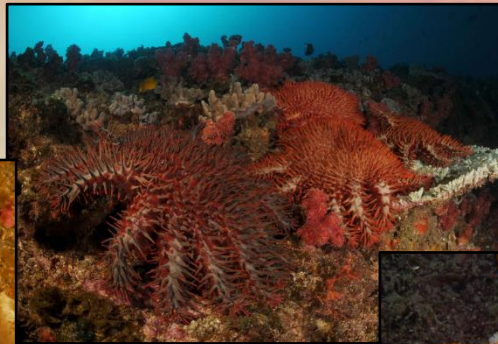
Notomyotida

Paxillosida

Valvatida

Velatida

Valvatacea – Valvatida – most new records to SA



Class

Asteroidea

Superorder

Forcipulatacea

Spinulosacea

Valvatacea

Order

Brisingida

Forcipulatida

Spinulosida

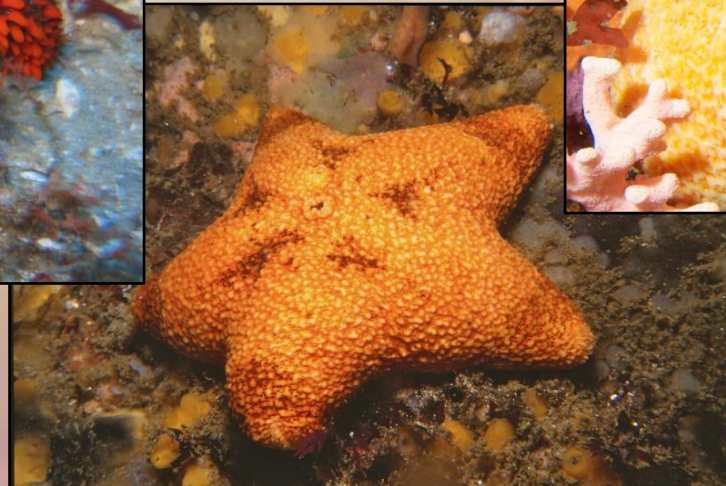
Notomyotida

Paxillosida

Valvatida

Velatida

Velatida (Order) – Key: asteroids which normally have weak skeletons, thick flesh bodies with large discs



Class

Asteroidea

Superorder

Forcipulatacea

Spinulosacea

Valvatacea

Order

Brisingida

Forcipulatida

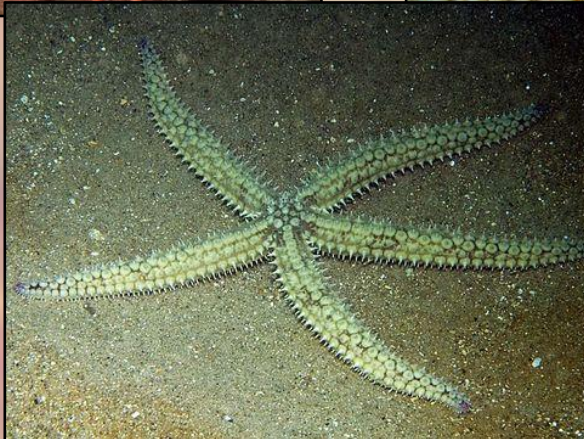
Spinulosida

Notomyotida

Paxillosida

Valvatida

Velatida





Thank you